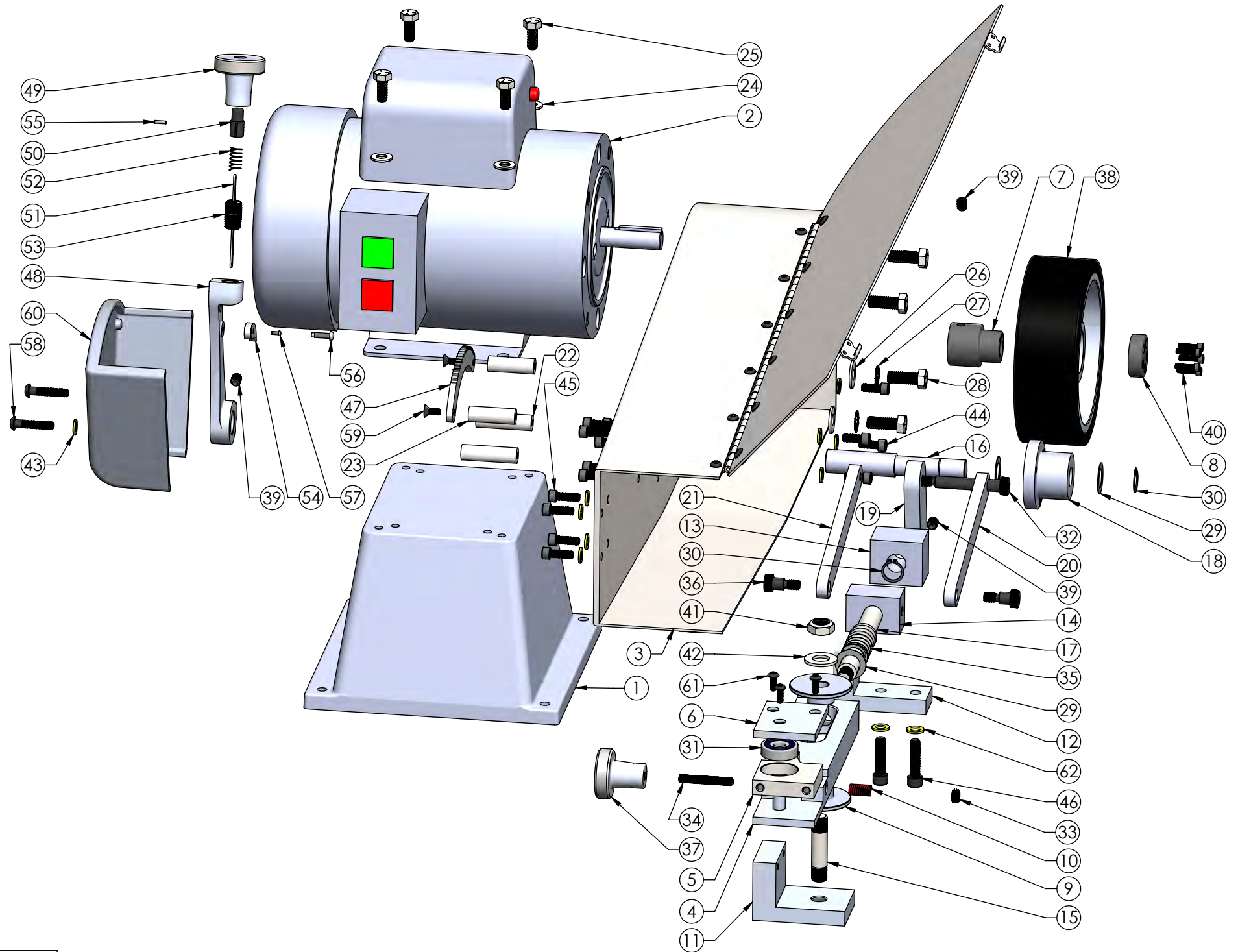


# MODEL 720M EXPLODED VIEW

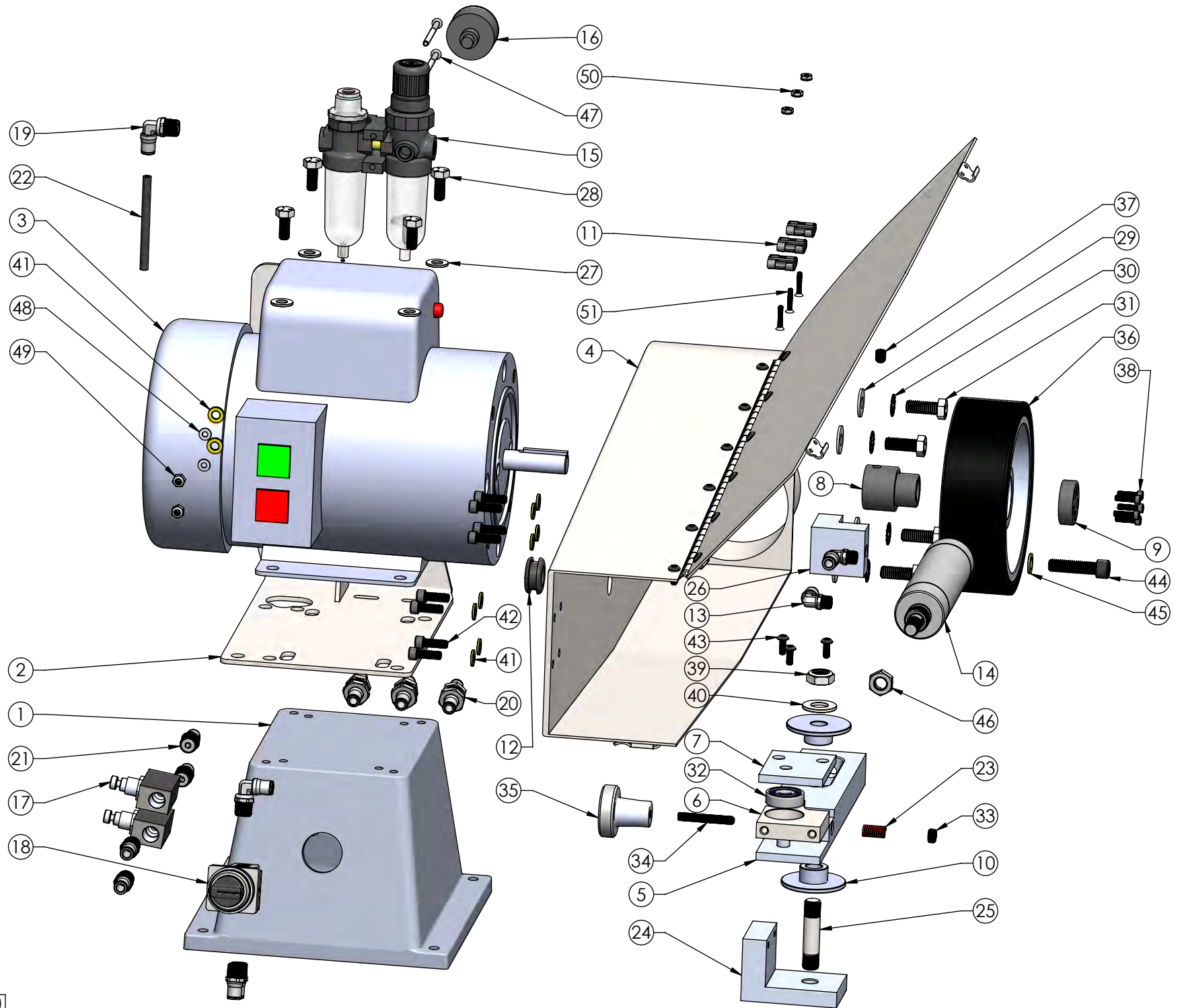


# MODEL 720M PARTS LIST

ITEM NO.	PART NUMBER	DESCRIPTION	QTY.
1	941	BASE-MACHINE	1
2	720 MOTOR	MOTER-CALL FACTORY	1
3	7200-2	FRAME-MAIN	1
4	7201-5	ARM-MAIN SLIDE	1
5	7201-6	PIVOT-TRACKING	1
6	7201-7	COVER-TRACKING	1
7	7202A	ADAPTOR, WHEEL	1
8	7202B	ADAPTOR, CAP	1
9	7203	GLIDE-DELRIN	2
10	7221	SPRING-TRACKING	1
11	7225	BASE-GLIDE	1
12	7226	BASE-GUIDE	1
13	7227	BUSHING-GUIDE	1
14	7228	ACTUATOR-PUSH/PULL	1
15	7229	STUD-GLIDE	1
16	7230	SHAFT-ACTUATOR	1
17	7231	SHAFT-GUIDE	1
18	7232	HOUSING-ACTUATOR	1
19	7233	LEVER-ACTUATOR	1
20	7234	LINK-ACTUATOR RH	1
21	7235	LINK-ACTUATOR LH	1
22	7236	STANDOFF-GUARD	2
23	7237	STANDOFF-SECTOR	2
24	4	WASHER 5/16 SAE	4
25	37	CAPSCREW 5/16-18 X 3/4	4
26	5-0023	WASHER-FLAT 5/16 USS	4
27	5-0014	WASHER 3/8 INTERNAL STAR	4
28	1-0001	CAPSCREW 3/8-16 x 1 GR. 5	4
29	5-0056	SHIM-ARBOR 5/8 x 1 x .02	3
30	701F	CIRCLIP 5/8	2
31	202B	BALL BEARING-M10xM30	1

ITEM NO.	PART NUMBER	DESCRIPTION	QTY.
32	2-0070	S.B. 3/8 x 2 1/8	1
33	7-0070	SET SCREW 7/16-14 x 7/32 HL	1
34	7-0071	SET SCREW 1/4-28 x 1 3/4 CP	1
35	626	SPRING-BELT TENSION	1
36	1-0040	3/8 x 3/8 S.B.	2
37	720-1	KNOB-TRACKING	1
38	707EXM	WHEEL-IDLER	1
39	25	SET SCREW 5/16-18 X 3/8 CP	3
40	2-0038	SHCS 8-32 x 5/8	5
41	20	NUT-NYLOK JAM 1/2-20	1
42	21	WASHER, 1/2 SAE PLTED	1
43	5	WASHER 1/4 AN960-416	17
44	2-0013	SHCS 1/4-20 X 5/8	7
45	209	SHCS 1/4-20 X 3/4	8
46	208	SHCS 5/16-18 x 1 1/4	2
47	736-1	SECTOR-BELT TENSION	1
48	7600-737G	HANDLE, QUICK CHANGE	1
49	737A	KNOB, HANDLE	1
50	737B	BUTTON	1
51	737C	STRIP, HANDLE	1
52	737D	SPRING, BUTTON	1
53	737E	NIPPLE, 1/4 CLOSE	1
54	737F	PAWL	1
55	26	PIN, ROLL 3/32 x 3/8	1
56	27	SCREW, DRIVE, #8 X 5/8	1
57	28	SCREW, DRIVE, #2 x 1/4	1
58	31-1	BHSHCS 1/4-20 X 1 1/4	2
59	7-0055	10-24 x 1/2 FHSHCS	2
60	7600-740	COVER-QUICK CHANGE	1
61	9	BHSHCS 10-24 X 1/2	3
62	18	WASHER, 960-516, AN	2

# MODEL 720A EXPLODED VIEW



## MODEL 720A PARTS LIST

ITEM NO.	PART NUMBER	DESCRIPTION	QTY.
1	941-1	BASE, CONTROL MOUNT	1
2	MB4C-720	BRACKET-MOUNTING	1
3	720 MOTOR	MOTER-CALL FACTORY	1
4	7200-3	FRAME-MAIN	1
5	7201-5	ARM-MAIN SLIDE	1
6	7201-6	PIVOT-TRACKING	1
7	7201-7	COVER-TRACKING	1
8	7202A	ADAPTOR, WHEEL	1
9	7202B	ADAPTOR, CAP	1
10	7203	GLIDE-DELFIN	2
11	7204	STRAP-TUBING 1/4	3
12	7205-1	GROMMET-7/8	1
13	7209	FITTING- 90 DEG. 1/8 NPT x 1/4T	2
14	7210	CYLINDER-AIR	1
15	7211	REGULATOR/OILER-AIR	1
16	7211-1	GUAGE-PRESSURE 1 1/2"	1
17	7212	VALVE-FLOW CONTROL	2
18	7213	VALVE-SELECTOR	1
19	7214	FITTING-90 DEG 1/4 NPT x 1/4T	2
20	7215	FITTING-BULKHEAD 1/4T x 1/4T	3
21	7217	FITTING-ST. 1/4 NPT x 1/4T	6
22	7219	TUBING-AIR 1/4 x 1/8	1
23	7221	SPRING-TRACKING	1
24	7225	BASE-GLIDE	1
25	7229	STUD-GLIDE	1
26	7238	BASE-CYLINDER	1

ITEM NO.	PART NUMBER	DESCRIPTION	QTY.
27	4	WASHER 5/16 SAE	4
28	37	CAPSCREW 5/16-18 X 3/4	4
29	5-0023	WASHER-FLAT 5/16 USS	4
30	5-0014	WASHER 3/8 INTERNAL STAR	4
31	1-0001	CAPSCREW 3/8-16 x 1 GR. 5	4
32	202B	BALL BEARING-M10xM30	1
33	7-0070	SET SCREW 7/16-14 x 7/32 HL	1
34	7-0071	SET SCREW 1/4-28 x 1 3/4 CP	1
35	720-1	KNOB-TRACKING	1
36	707EXM	WHEEL-IDLER	1
37	25	SET SCREW 5/16-18 X 3/8 CP	1
38	2-0038	SHCS 8-32 x 5/8	5
39	20	NUT-NYLOK JAM 1/2-20	1
40	21	WASHER, 1/2 SAE PLTED	1
41	5	WASHER 1/4 AN960-416	10
42	209	SHCS 1/4-20 X 3/4	8
43	9	BHSHCS 10-24 X 1/2	3
44	2-0010	SHCS 3/8-16 X 1 1/2	1
45	17	WASHER 3/8 AN960-616	1
46	4-0030	NUT-7/16-20 JAM	1
47	3-0037	SCREW-8-32 x 2 1/4 PH	2
48	5-0049	WASHER- #8 FLAT	2
49	4-0026	NUT- 8-32 NYLOCK	2
50	23	NUT, 6-32 KEP	3
51	2-0061	SCREW- 6-32 x 3/4 FH	3